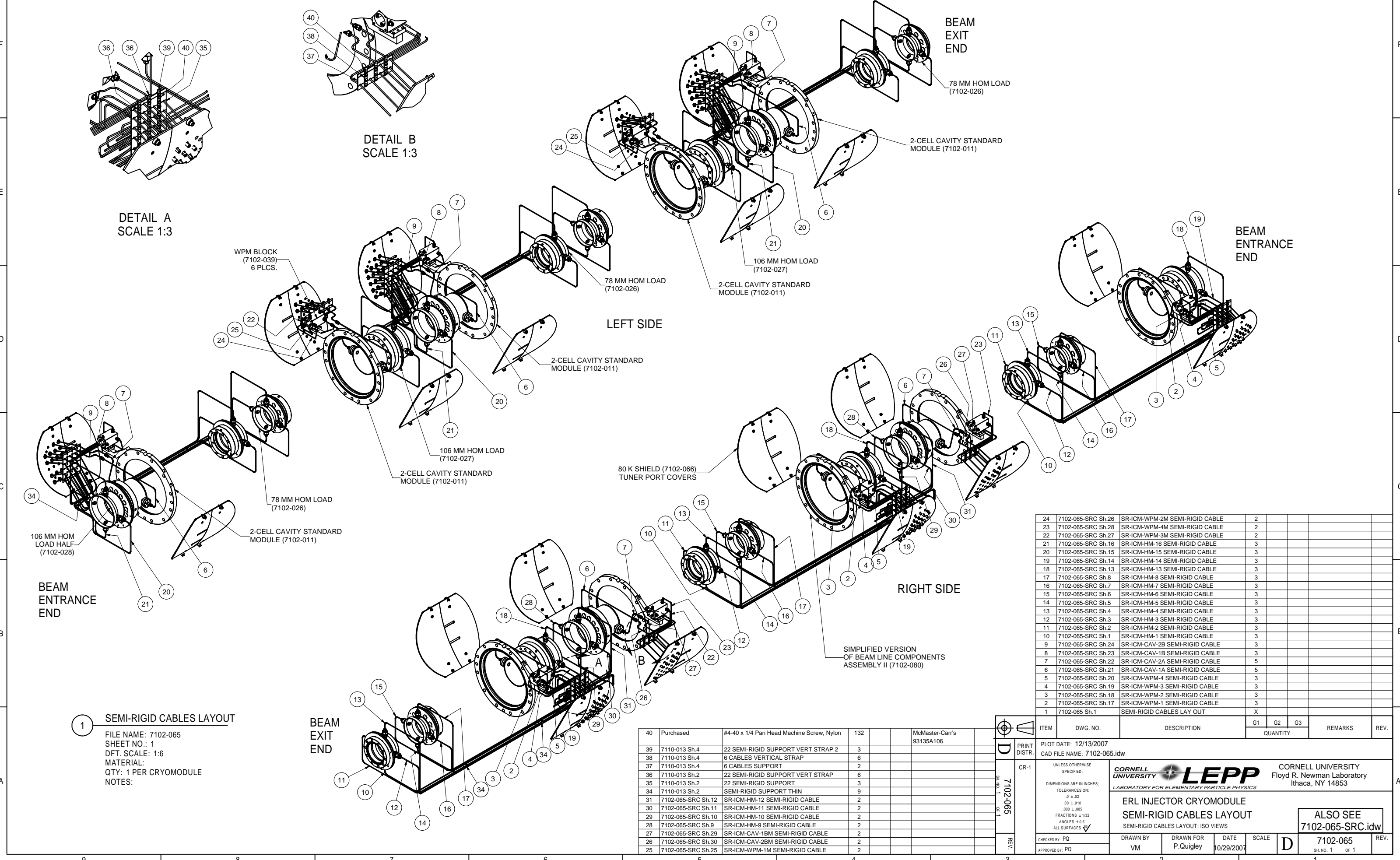


REVISIONS			
SYM.	ZONE	DESCRIPTION	DATE APP.



1 SEMI-RIGID CABLES LAYOUT
FILE NAME: 7102-065
SHEET NO.: 1
DFT. SCALE: 1:6
MATERIAL:
QTY: 1 PER CRYOMODULE
NOTES:

40	Purchased	#4-40 x 1/4 Pan Head Machine Screw, Nylon	132		McMaster-Carr's 93135A106
39	7110-013 Sh.4	22 SEMI-RIGID SUPPORT VERT STRAP 2	3		
38	7110-013 Sh.4	6 CABLES VERTICAL STRAP	6		
37	7110-013 Sh.4	6 CABLES SUPPORT	2		
36	7110-013 Sh.2	22 SEMI-RIGID SUPPORT VERT STRAP	6		
35	7110-013 Sh.2	22 SEMI-RIGID SUPPORT	3		
34	7110-013 Sh.2	SEMI-RIGID SUPPORT THIN	9		
31	7102-065-SRC Sh.12	SR-ICM-HM-12 SEMI-RIGID CABLE	2		
30	7102-065-SRC Sh.11	SR-ICM-HM-11 SEMI-RIGID CABLE	2		
29	7102-065-SRC Sh.10	SR-ICM-HM-10 SEMI-RIGID CABLE	2		
28	7102-065-SRC Sh.9	SR-ICM-HM-9 SEMI-RIGID CABLE	2		
27	7102-065-SRC Sh.29	SR-ICM-CAV-1BM SEMI-RIGID CABLE	2		
26	7102-065-SRC Sh.30	SR-ICM-CAV-2BM SEMI-RIGID CABLE	2		
25	7102-065-SRC Sh.25	SR-ICM-WPM-1M SEMI-RIGID CABLE	2		

24	7102-065-SRC Sh.26	SR-ICM-WPM-2M SEMI-RIGID CABLE	2							
23	7102-065-SRC Sh.28	SR-ICM-WPM-4M SEMI-RIGID CABLE	2							
22	7102-065-SRC Sh.27	SR-ICM-WPM-3M SEMI-RIGID CABLE	2							
21	7102-065-SRC Sh.16	SR-ICM-HM-16 SEMI-RIGID CABLE	3							
20	7102-065-SRC Sh.15	SR-ICM-HM-15 SEMI-RIGID CABLE	3							
19	7102-065-SRC Sh.14	SR-ICM-HM-14 SEMI-RIGID CABLE	3							
18	7102-065-SRC Sh.13	SR-ICM-HM-13 SEMI-RIGID CABLE	3							
17	7102-065-SRC Sh.8	SR-ICM-HM-8 SEMI-RIGID CABLE	3							
16	7102-065-SRC Sh.7	SR-ICM-HM-7 SEMI-RIGID CABLE	3							
15	7102-065-SRC Sh.6	SR-ICM-HM-6 SEMI-RIGID CABLE	3							
14	7102-065-SRC Sh.5	SR-ICM-HM-5 SEMI-RIGID CABLE	3							
13	7102-065-SRC Sh.4	SR-ICM-HM-4 SEMI-RIGID CABLE	3							
12	7102-065-SRC Sh.3	SR-ICM-HM-3 SEMI-RIGID CABLE	3							
11	7102-065-SRC Sh.2	SR-ICM-HM-2 SEMI-RIGID CABLE	3							
10	7102-065-SRC Sh.1	SR-ICM-HM-1 SEMI-RIGID CABLE	3							
9	7102-065-SRC Sh.24	SR-ICM-CAV-2B SEMI-RIGID CABLE	3							
8	7102-065-SRC Sh.23	SR-ICM-CAV-1B SEMI-RIGID CABLE	3							
7	7102-065-SRC Sh.22	SR-ICM-CAV-2A SEMI-RIGID CABLE	5							
6	7102-065-SRC Sh.21	SR-ICM-CAV-1A SEMI-RIGID CABLE	5							
5	7102-065-SRC Sh.20	SR-ICM-WPM-4 SEMI-RIGID CABLE	3							
4	7102-065-SRC Sh.19	SR-ICM-WPM-3 SEMI-RIGID CABLE	3							
3	7102-065-SRC Sh.18	SR-ICM-WPM-2 SEMI-RIGID CABLE	3							
2	7102-065-SRC Sh.17	SR-ICM-WPM-1 SEMI-RIGID CABLE	3							
1	7102-065 Sh.1	SEMI-RIGID CABLES LAY OUT	X							

PRINT
DISTR.

CR-1

7102-065

REV.

UNLESS OTHERWISE SPECIFIED:
DIMENSIONS ARE IN INCHES:
TOLERANCES ON:
.0 ± .02
.00 ± .010
FRACTIONS ± 1/32
ANGLES ± 0.5°
ALL SURFACES

CORNELL UNIVERSITY
LEPP
LABORATORY FOR ELEMENTARY PARTICLE PHYSICS

ERL INJECTOR CRYOMODULE
SEMI-RIGID CABLES LAYOUT
SEMI-RIGID CABLES LAYOUT: ISO VIEWS

ALSO SEE
7102-065-SRC.idw

CHECKED BY: PQ
APPROVED BY: PQ

DRAWN BY: VM
DRAWN FOR: P.Quigley

DATE: 10/29/2007

SCALE: D

7102-065
SH. NO. 1 OF 1

REV.

ITEM

DWG. NO.

DESCRIPTION

QUANTITY

REMARKS

REV.

G1

G2

G3

PLOT DATE: 12/13/2007

CAD FILE NAME: 7102-065.idw